



(An ISO 9001:2015, ISO 14001:2015, ISO 13485:2003  
OHSAS 18001:2007, CE and NSIC Registered Company)

**Registered Office:**

205-Shree Prasad House, 35th road, TPS III, Near National College,  
Linking Road, Bandra (W) Mumbai-400050,  
Tel.: 022-26057781, Mob.: 9930920444

**Branch Office:**

K.NO-03, Hardoi road, Sarfarajganj Balaganj, Lucknow, Uttar Pradesh - 226003  
Tel. : 0522-2409964, Mobile : +91 9838471861, 6307996200, 6307996202








**Delhi Office:**

F7, Second Floor, East of Kailash, New Delhi-110065, Mobile: +91-9971234320  
Workshop : Sarfarazganj, Hardoi Road, Lucknow - 226003  
Website : [www.eramds.com](http://www.eramds.com), Email Id : [info@eramds.com](mailto:info@eramds.com), [sales@eramds.com](mailto:sales@eramds.com)



**ERA'S MEDICAL DEVICES & SERVICES PVT. LTD.**

# INDEX

-  ICU SOLUTIONS
-  GENERAL HOSPITAL SOLUTIONS
-  BEDSIDE SOLUTIONS
-  PEDIATRIC SOLUTIONS
-  EMERGENCY & OPERATION THEATRE SOLUTIONS
-  OTHER HOSPITAL SOLUTIONS
-  ORTHOPEDIC SOLUTIONS

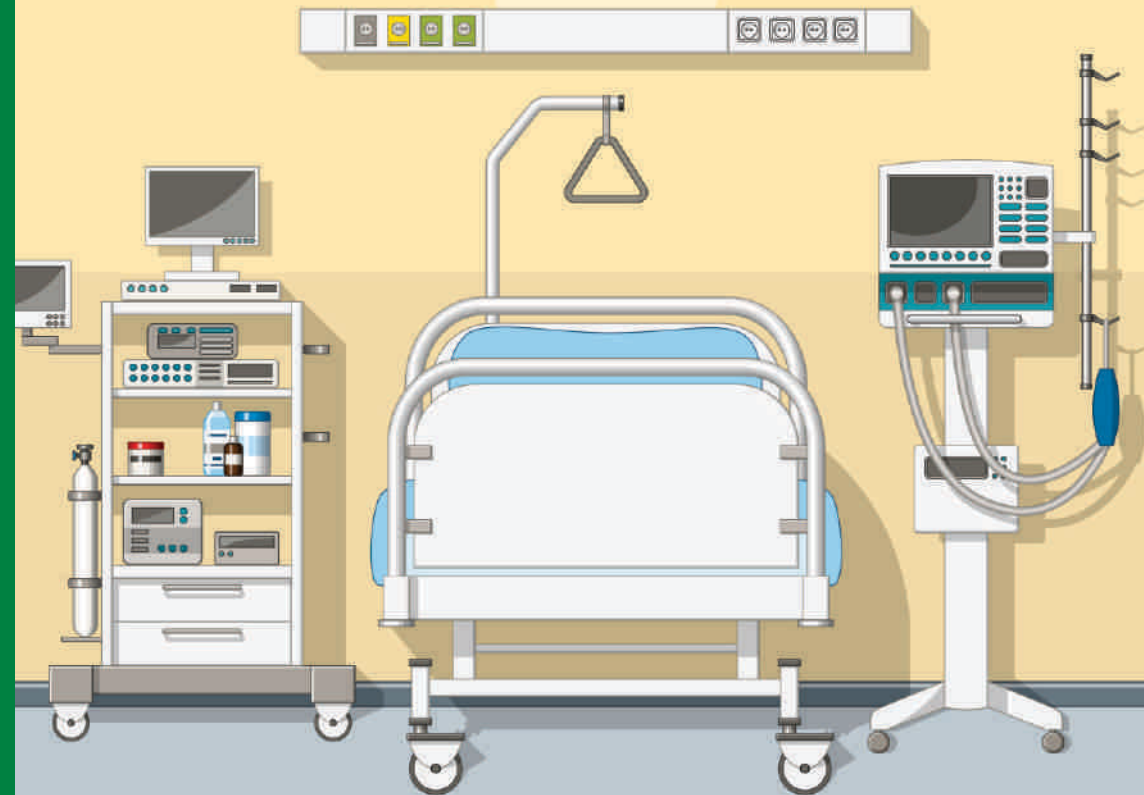
## ICU SOLUTIONS



## HYGIENIC

The bacterial fighting super element makes a comeback in Hospitals- Metallic Copper used in ICU equipments.

- Anti microbial
- Reduces Hospital Acquired Infection (HAI's)



**SS3-001**

**FULLY MOTORIZED ICU BED  
(Remote operated) 304/202**

- Size: 2160 L x 990 W x 600-750 H mm (including buffer).
- Frame work made of rectangular SS tube 50 x 30 mm
- Perforated SS sheet top in four sections.
- Back-Rest and Knee-Rest movement with linear actuator (from Linkan Taiwan), Hi-low position movements with column activator (from Linkan Taiwan).
- Trendelenburg / Reverse trendelenburg positions with column activator (from Linkan Taiwan).
- SS/ABS moulded head and foot bows.
- SS/ABS pull down safety side railing (4 pcs).
- Telescopic IV rod.
- Bed Mounted on central locking castors 125 mm.
- Four Location for IV rod.
- Available in Glossy or Matt finish.

**SS3-001A**

**FULLY MOTORIZED ICU BED  
(Remote operated)304/202**

- Size: 2160 L x 990 W x 600-750 H mm (including buffer).
- Frame work made of rectangular SS tube 50 x 30 mm,
- Perforated SS sheet top in four sections.
- Back-Rest and Knee-Rest movement with linear actuator (from Linkan Taiwan), Hi-low position movements with column activator (from Linkan Taiwan).
- Trendelenburg / Reverse Trendelenburg positions with linear activator (from Linkan Taiwan).
- SS/ABS moulded head and foot bows.
- SS/ABS pull down safety side railing.
- Four Location for IV rod.
- Bed Mounted on central locking castors 125 mm.
- Available in Glossy or Matt finish.



### SS3-002

#### ICU BED (MECHANICAL)

##### Stainless Steel 304/202

- Size: 2160 L x 960W x 600-750 H mm (including buffer).
- Frame work made of rectangular 50x30 mm SS tube
- 4 Section top made of perforated SS sheet.
- Back-Rest, Knee-Rest, Hi-Low positions & Trendelenburg / Reverse Trendelenburg maneuvered
- SS tubular 32 mm mounted head & foot boards or ABS Head & Foot Boards.
- SS/ABS Pull down safety side railing (2 pcs).
- Telescopic IV rod.
- Bed Mounted on central locking castors 125 mm.
- Four location for IV rod.
- Castors 125 mm.
- Available in Glossy or Matt finish.



### SS3-002A

#### ICU BED (MECHANICAL)

##### Stainless Steel 304/202

- Size: 2160 L x 990 W x 600-750 H mm (including buffer).
- Frame work made of rectangular SS tube 50 x 30 mm
- Perforated SS sheet top in four sections.
- Back-Rest, Knee-Rest, Hi-low Positions by crank.
- Trendelenburg / Reverse Trendelenburg positions by crank.
- SS/ABS moulded head and foot boards.
- SS/ABS Pull down safety side railing (2 pcs).
- Telescopic IV rod.
- Bed Mounted on central locking castors 125 mm.
- Four Location for IV rod.
- Available in Glossy or Matt finish.



**SS3-0026****INSTRUMENT TROLLEY**  
**Stainless Steel 304/202**

- Size: 610 L x 460 W x 810 H mm.
- 32 x 32 mm SS tubular legs.
- SS top & bottom shelves with 3 side railing on top.
- Trolley mounted on 125 mm-diameter castor wheels.
- Available in Glossy or Matt finish.

**SS3-0024A****CARDIAC TABLE (HYDRAULIC)**  
**Stainless Steel 304/202**

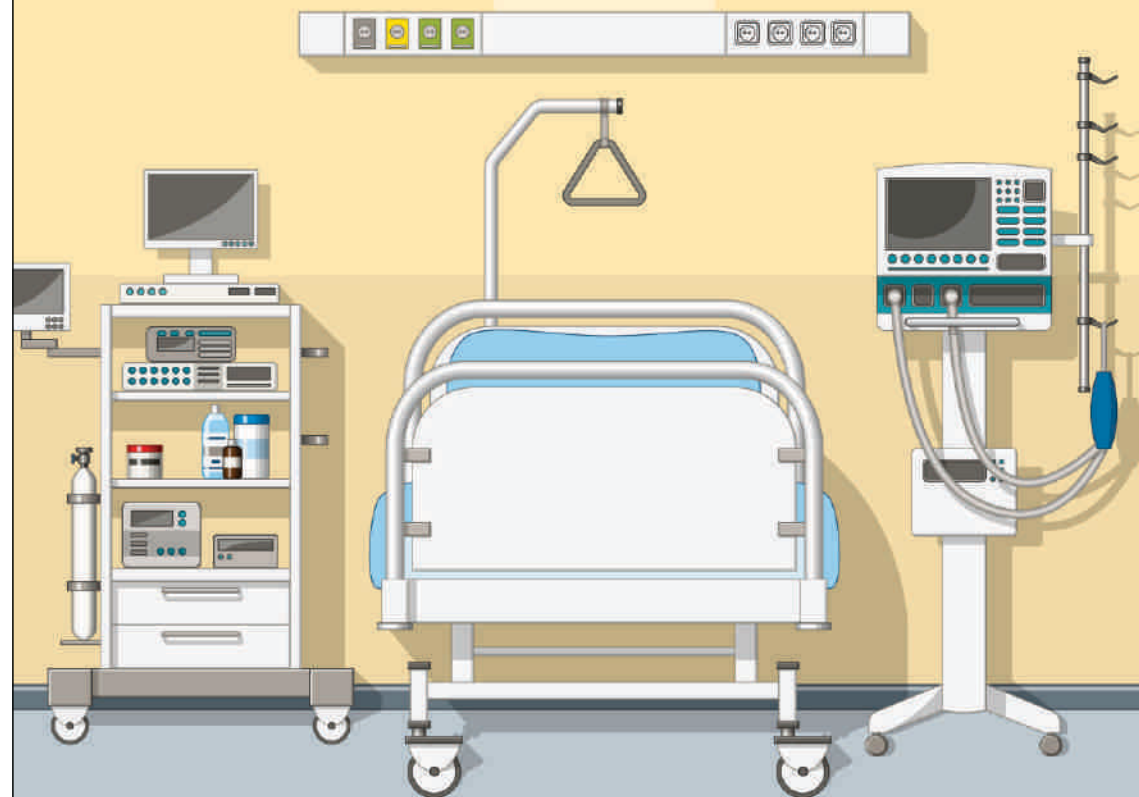
- Size: 610 x 410 mm Particle Board with adjustable height by hydraulic system.
- Square 40 x 40 mm frame work mounted on 50 mm nylon wheels.
- Available in Glossy or Matt finish.



**SS3-0024**

**CARDIAC/MAYO'S TABLE (MECHANICAL)**  
**Stainless Steel 304/202**

- Size: 610 x 410 mm SS tray with adjustable height by knob.
- Square 40 x 40 mm frame work mounted on 50 mm nylon wheels.
- Available in Glossy or Matt finish.





*A standard set of user friendly Medical equipment*

- *Easy to carry, easy to move*
- *Hygienic*

## GENERAL HOSPITAL SOLUTIONS







### SS3-003

#### **HOSPITAL FOWLER BED (SS PANELS)** **Stainless Steel 304/202**

- Size: 2160L x 960W x 600H mm (including buffer).
- Frame work made of rectangular 50x30 mm.
- Four Section top made of perforated SS sheet.
- Back-Rest, Knee-Rest, maneuvered by separate screw from foot end.
- SS 32 mm mounted head & foot bows.
- Bed Mounted on 125mm castors with two brakes.
- Four Location for IV rod.
- Available in Glossy or Matt finish.



### SS3-004

#### **HOSPITAL SEMI FOWLER BED (SS PANELS)** **Stainless Steel 304/202**

- Size: 2160 L x 960 W x 600 H mm (including buffer).
- Frame work made of rectangular 50x30 mm.
- 2 Section top made of perforated SS sheet.
- Back-Rest, section maneuvered by screw handle from foot end.
- Location for IV rod.
- Available in Glossy or Matt finish.

**SS3-005****HOSPITAL GENERAL BED**  
**Stainless Steel 304/202**

- Size: 1900 L X 900 W X 600 H mm.
- Main frame of rectangular pipe 50 x 25 mm.
- SS sheet top tubular head and foot bows on rubber stumps.
- Available in Glossy or Matt finish.

**SS3-0027****EXAMINATION TABLE (2 SECTION)**  
**Stainless Steel 304/202**

- Size: 1860 L x 510 W x 760 H mm.
- Frame work made of 32 x 32 mm square pipe.
- Legs made of 32 mm round pipe and fitted with rubber shoes.
- Adjustable back rest operated by hand lever.
- Available in Glossy or Matt finish.

**SS3-0032****WHEEL CHAIR (FOLDING)**  
**Stainless Steel 304/202**

- SS tubular frame.
- 150 mm front castor & 280 mm rear wheel.
- Seat and back made of foldable material.
- Leg support and foot rest (Aluminum/PVC/SS).
- PU arm rest.

**SS3-0033****WHEEL CHAIR FIXED**  
**Stainless Steel 304/202**

- SS tubular frame.
- 150 mm front castor & 280 mm rear wheel.
- Seat and back made of SS sheet.
- Double press bent seat back, leg support and foot rest (aluminum/PVC/SS).
- PU arm rest.
- Attendant hand brake provision.



**SS3-0019****BED SIDE SCREEN (3 PANELS)**  
**Stainless Steel 304/202**

- Size: 1675 H x 2440 L mm.
- SS tubular frame work mounted on 50 mm nylon wheels without/ with curtains.
- Available in Glossy or Matt finish.

**SS3-0019 A****BED SIDE SCREEN (4 PANELS)**  
**Stainless Steel 304/202**

- Size: 1675 H x 2440 L mm.
- SS tubular frame work mounted on 50 mm nylon wheels without/ with curtains.
- Available in Glossy or Matt finish.

# SS3-0025

## DRESSING TROLLEY WITH BOWL & BUCKET. Stainless Steel 304/202

- Size: 610 L x 460 W x 810 H mm.
- Approx 32 x 32 mm SS tubular legs.
- Two SS shelves with 3 side railing on top.
- Trolley mounted on 125 mm - diameter castor wheels.
- Available in Glossy or Matt finish.



# SS3-0029

## LINEN TROLLEY WITH PLASTIC BUCKET Stainless Steel 304/202

- Push handle at one end.
- Tubular frame mounted on 100 mm castor wheels (2 pcs) and rubber stump (1 pc).
- Superior quality plastic bucket 80 liters.
- Available In Glossy or Matt finish.





SS3-0020

OVER BED TABLE  
Stainless Steel 304/202

- Size: 1070 L x 410 W x 990 H mm.
- Tubular frame work mounted on 50 mm nylon wheels.
- SS top 760 x 410 mm.
- Available in Glossy or Matt finish.

SS3-0042

CYLINDER TROLLEY (B TYPE)  
Stainless Steel 304/202

- Frame work made of SS tube 25 mm.
- SS sheet base plate.
- Fitted with 100 mm castor wheel.
- Available in Glossy or Matt finish.
- Cylinder Trolley (Jumbo) also available.



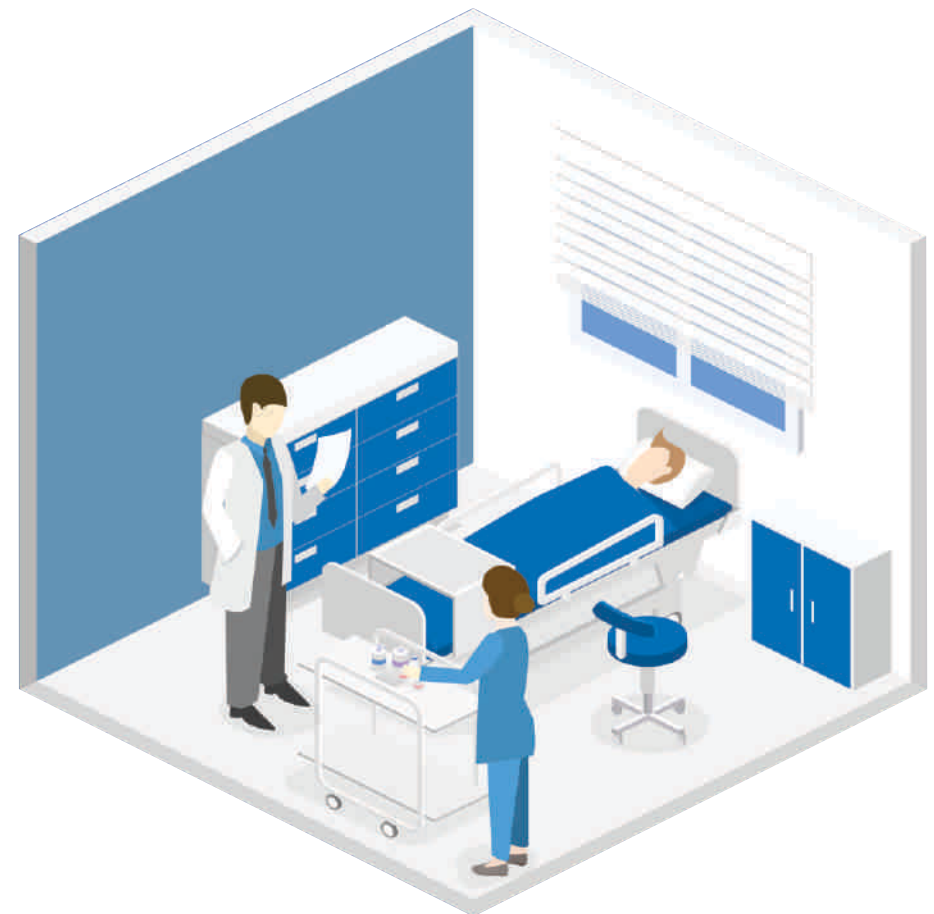
# BEDSIDE SOLUTIONS



## COMFORT

*Sturdy long lasting, Hospital accessories specially designed keeping in mind the ease of the patient and the helpers.*

- *Easy to manoeuver and can be easily fixed in small places*
- *Hygienic*





### SS3-0024B

#### **BED SIDE ALMIRAH** **Stainless Steel 304/202**

- Tray size: 609 L x 330 W x 889 H mm.
- Two doors with lock facility.
- Available in Glossy or Matt finish.



### SS3-009

#### **BED SIDE LOCKER (DELUXE)** **Stainless Steel 304/202**

- Size: 400 L x 400 W x 760 H mm.
- SS sheet duly double press bent having one box and one shelf.
- SS top with three sides raised edges.
- Base fitted with wheel 50 mm nylon wheels.
- Available in Glossy or Matt finish.



### SS3-0010

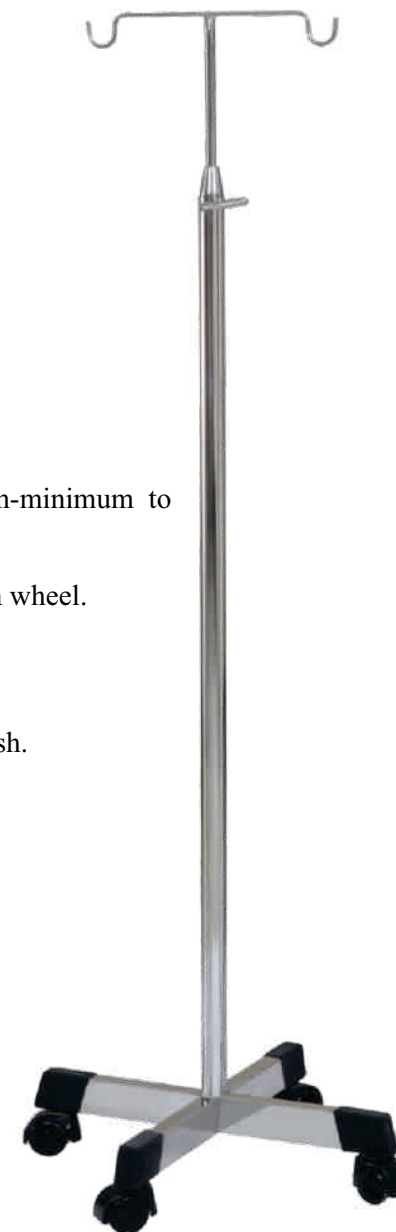
#### **BED SIDE LOCKER (STD.)** **Stainless Steel 304/202**

- Size: 400 L x 400 W x 760 H mm.
- Tubular pipe construction fitted with rubber stumps.
- Stainless steel 3 shelves.
- Available in Glossy or Matt finish.

### SS3-0015

#### **SALINE STAND** **Stainless Steel 304/202**

- SS tubular pipe.
- SS adjustable rod form 1320 mm-minimum to 1980 mm-maximum.
- Four leg base with 50 mm nylon wheel.
- Double hook.
- Hook length is 300 mm (outer).
- Available in Glossy or Matt finish.



**SS3-0013****PATIENT STOOL REVOLVING (GENERAL)**  
**Stainless Steel 304/202**

- Height 400 - 600 mm adjustable SS top through screw.
- SS tubular pipe 32mm three legs fitted with PVC stumps.
- Top made of SS.
- Available in Glossy or Matt finish.

**SS3-0012****PATIENT STOOL REVOLVING (DELUXE)**  
**Stainless Steel 304/202**

- Height 400 - 600 mm adjustable SS top through screw.
- SS tubular pipe 25 mm four legs fitted with PVC stumps.
- Foot ring supports.
- Top made of SS.
- Available in Glossy or Matt finish.



**SS3-0016****KICK BUCKET****Stainless Steel 304/202**

- SS tubular frame mounted on 50 mm nylon wheel.
- SS basin size: 360 mm.
- Available in Glossy or Matt finish.

**SS3-0017****WASH BASIN WITH CASTORS****Stainless Steel 304/202**

- SS basin 360 mm.
- Frame work made of SS tube.
- Legs fitted with rubber shoes/50 mm nylon wheels.
- 12 mm tubular triangular support.
- Available in Glossy or Matt finish.

**SS3-0011****VISITOR STOOL****Stainless Steel 304/202**

- Size: 300 L x 375 W x 510 H mm.
- SS square 25mm x 25 mm frame fitted with rubber stump.
- SS sheet duly double press bent.
- Available in Glossy or Matt finish.

**SS3-0018****SPUTUM STAND WITHOUT CASTORS****Stainless Steel 304/202**

- Size: SS ring (10mm) for 300 mm basin support.
- Frame work made of SS tube.
- Legs fitted with rubber shoes.
- 12mm tubular triangular support.
- Available in Glossy or Matt finish.

**SS3-0022****FOOT STEP (DOUBLE)**  
**Stainless Steel 304/202**

- Size: (460 L x 460 W x 460 H mm).
- SS tubular frame fitted with rubber stump.
- Two tops - made of SS sheet.
- Available in Glossy or Matt finish.

**SS3-0023****FOOT STEP (SINGLE)**  
**Stainless Steel 304/202**

- Size: (460 L x 300 W x 250 H mm).
- SS tubular legs fitted with rubber stump.
- SS top.
- Available in Glossy or Matt finish.

# PEDIATRIC SOLUTIONS



## CARE

*Providing the care the children deserve...*

- *Child friendly design which enable them to feel comfortable*
- *Easy to carry, easy to move*
- *Hygenic*





### SS3-007

#### **BABY CRADLE** **Stainless Steel 304/202**

- Size 1000 L x 760 W x 510 H mm.
- Frame work made of SS tube.
- Sheet hanging cradle.
- Legs fitted with rubber shoes.
- Available in Glossy or Matt finish.



### SS3-007A

#### **BABY CRIB** **Stainless Steel 304/202**

- Size: 910 L X 450 W X 910 H mm.
- Crib size 760 L X 380 W X 300 H mm.
- Frame work made of SS 25 mm round pipe.
- Provided with 100 mm diameter castors, two with brakes.
- Available in Glossy or Matt finish.





**SS3-008**

**PEDIATRIC BED**  
**Stainless Steel 304/202**

- Size: 1530 L X 760 W X 600 H mm.
- Main frame of rectangular pipe 50 x 25 mm.
- Perforated SS sheet top.
- Tubular head & foot bows of equal height with vertical tube supports on rubber stumps.
- Drop down type safety side railings provided.
- Available in Glossy or Matt finish.



## EMERGENCY & OPERATION THEATRE SOLUTIONS



## RELIABILITY

*Emergency is the gateway to Hospital.*

- *robust equipment with especially crafted design for quick manoeuvring.*



**SS3-0035****EMERGENCY RECOVERY TROLLEY**  
**Stainless Steel 304/202**

- Size: 2100 L x 650 W x 650-800 H mm.
- Hydraulic mechanism for Height adjustment.
- SS Side rail for safety of patients.
- Telescopic IV rod and oxygen cylinder cage.
- Trolley mounted on 125 mm castors.
- X-Rays Cassette Holder.
- Trendelenburg and Reverse Trendelenburg positions by gas spring.
- Available in Glossy and Matt finish.

**SS3-0030****STRETCHER TROLLEY ( WITH SIDE RAILINGS)**  
**Stainless Steel 304/202**

- Size: 2130 L x 560 W x 820 H mm.
- Frame work made of 25 mm tubular SS pipe.
- Swing away type safety side railing.
- Trolley mounted on 200 mm diameter castors with two brakes.
- Removable stretcher top made of SS sheet.
- Available in Glossy or Matt finish.

**SS3-0043****SS LAPRO INSTRUMENT TROLLEY**

- Main Frame made of SS Rectangular 50 x 25 mm.
- Four shelf one sliding cabinet made of SS sheet, Top shelf fixed, 3 shelf adjustable.
- SS Cylinder cage, IV Rod attached.
- Double Wheel castor 125 mm with two brake.
- 7 no. Switch socket combined fitted on WPC board with 5 meter lead.
- 

**SS3-0051****SWAB RACK**

- Size :- 800 L x 400 W x 800 H mm
- Frame Work Made of round SS tube 25 mm
- SS Sheet Bottom tray .
- Base fitted with 100 mm Castor wheels.



### MS3-0044(A)

#### O.T Light Single Dome

- Illumination at 1 Meter :- 20000 to 1,60,000 Length.
- Focus Size : 120mm to 280mm
- Power Consumption : 100 W
- Lifespan : 50,000 Hrs.
- Color Temperature : 3800K to 4800 K
- Color Rendering Index 95
- Rotating Angle : 270<sup>0</sup>



### MS3-0044(B)

#### O.T Light Double Dome

- Illumination at 1 Meter :- 20000 to 1,60,000 Length.
- Focus Size : 120mm to 280mm
- Power Consumption : 180 W
- Lifespan : 50,000 Hrs.
- Color Temperature : 3800K to 4800 K
- Color Rendering Index 95
- Rotating Angle : 270<sup>0</sup>





**SS3-0028**

**EMERGENCY CRASH CART**  
**Stainless Steel 304/202**

- Frame size: 660 L x 380 W x 1650 H mm.
- Tubular frame top tray for monitor and Pulse Oxymeter.
- Six removable bins, two modular storage units with lock, three drawers each.
- Oxygen cylinder holder, IV rod & cardiac message board.
- Trolley mounted on 125 mm - diameter heavy duty castors, with two brakes.
- Available in Glossy or Matt finish.

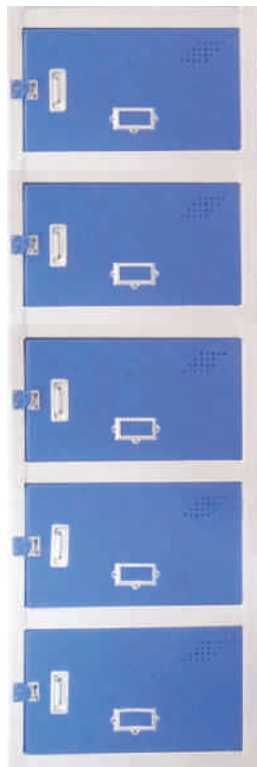


## VARIETY

- *Solutions customized to meet specific needs.*

## OTHER HOSPITAL SOLUTIONS



**SS3-0053****LOCKER 5 DOOR  
SS 304/202/CRC Epoxy Coated**

- Locker made of MS CRC Sheet.
- Size : L 18" X W 15" X H 60".
- Bolt lock, Handle 3" & Card Holder available.
- Colour option available.

**SS3-0038****LECTURE THEATER CHAIR  
Stainless Steel 202**

- Side made of 1.25 mm SS tube.
- Base frame
- Two comfortable PU arms.
- Wooden Letter pad .
- Seat of high quality PU form covered with cloth or leather.

**SS3-0039****GOODS TROLLEY****Stainless Steel 304/202**

- Frame work made of SS tube.
- Wire mesh basket.
- Legs fitted with four 100 mm castor.
- Available in Glossy or Matt finish.

**SS3-0034A****PLANTER****Stainless Steel 304/202**

- Main frame size: 900 x 375 x 900 mm.
- Planter main frame made of 25mm square pipe fitted with 125 mm castor wheel.
- Three cradle fitted with PVC molded tray.
- Center tray are fixed, upper and lower tray sliding with bearing.
- Side trays fitted with P.V.C Molded sheet.

**SS3-0034****SS RAILINGS**  
**Stainless Steel 202**

- Frame work made of round SS tube
  - Glass fitted as per requirement.
- Available in Glossy or Matt finish.
  - Available In different designs.

**SS3-0014****LABORATORY STOOL**  
**Stainless Steel 304/202**

- Base made of rectangular SS tube 50 x 25 mm.
- Height adjustable 620 - 870 mm hydraulic seat.
- Base fitted with 50 mm nylon wheels.
- Cushion/wood/SS top seat also available.
- Available in Glossy or Matt finish.



**SS3-0040****VISITOR BENCH**  
**Stainless Steel 304/202**

- Size: 1525 x 400 x 460 mm.
- Size: of back rest 1525 x 180 mm.
- SS perforated sheet.
- SS support 50 x 25 mm rectangular pipe.
- Available in Glossy or Matt finish.

**SS3-0038B****LECTURE THEATER FURNITURE**  
**Stainless Steel 202**

- Size: 3900 L x 400 W x 750 H mm.
- Made of rectangular pipe.
- Desktop fitted with SS Sheet.
- MS Part colour options available.



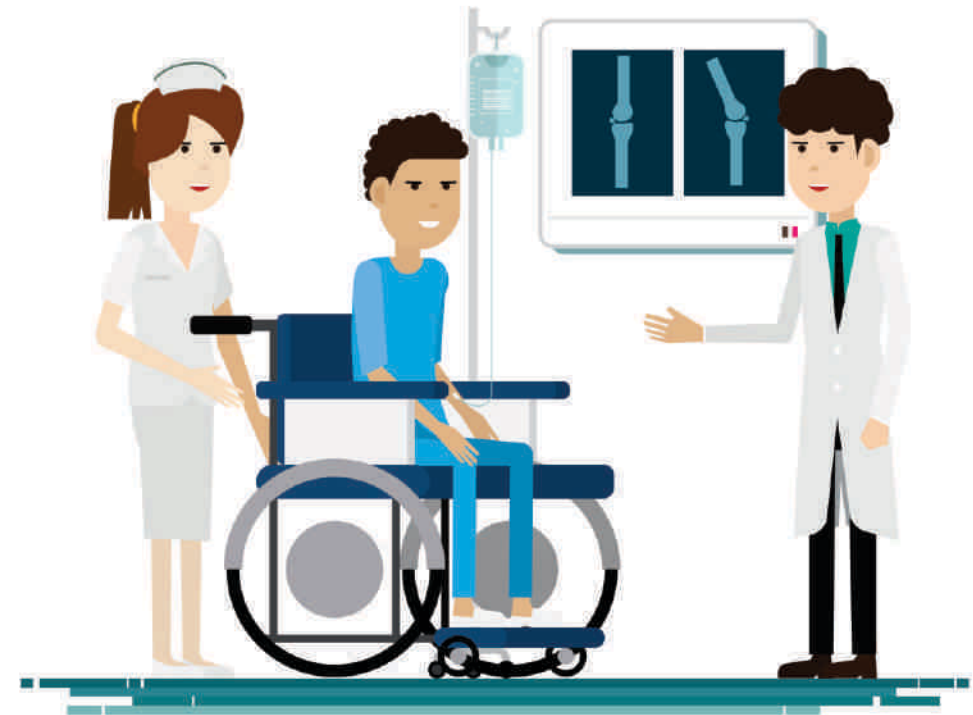


## ORTHOPAEDIC SOLUTION



## PARAPLEGIC BED

- *The bed with multi support to the patient.*
- *Hygienic*
- *Prevents bed sores*





### SS3-004A

#### **HOSPITAL ORTHOPAEDIC/PARAPLEGIC BED/ ICU BED Acrylic, Stainless Steel 304/202**

- Size: 2160 L x 960 W x 600 H mm (including buffer).
- Frame work made of rectangular 50x30 mm.
- 2 Section top made of perforated SS sheet /Acrylic.
- Certificate of registration of design received from Government of India, The Patent Office for this bed
- Back-Rest, section maneuvered by screw handle from foot end.
- Provision for passing the faeces on the bed maneuvered by screw handle from foot end.
- Location for IV rod.
- Available in Glossy or Matt finish.
- Special slot for X-ray film with rail attachment, X-ray can be taken without disturbing the patient

### Ortho Bed Write Up

The bed is a patented technology a new invention in the field of health. An invention with the aim of nursing the immobile patients. Uniquely designed to diminish the pain analogous with musculo-skeletal and paraplegic disorder.

The bed will enable the patient who is bed ridden, to pass stool and urine easily. This bed is made in consideration to best possible ergonomics and inclusive of all the features of a full fowler bed and it has four parts which helps the patient to stay in a comfortable position such as lying down, chair position or semi lying position.

It consists of frame work having four section tops made of perforated S.S 304 grade. An opening is provided in section top so that the patient can pass stool or urine. Section top can be converted as back rest when the patient wants to sit. Similarly section top can be lowered down to convert the bed in chair position.

In one of the preferred embodiment section top are having radiolucent material to support the body of the patient which enables to take the superior quality radiographs, most often called x-rays, without shifting the patient to other place, X-ray arrangement comprises of tray fixed in the sliding channels which are attached to the frame work below section top. Movement of section top is controlled by movement arm system which comprises of winch handle for providing greater leverage and power in less effort, connecting rods and inclined strips. Connecting rods and section tops are attached with the lower side of the frame under the section top.

Respective winch handles are rotated to actuate connecting arms which in turn gives motion to inclined strips connected with section top for the movement of section top. When winch handle is rotated anticlockwise section top rises up and becomes the back rest, and when rotated clock wise to put section top in bed level.

Winch handles are rotated clock wise to give down ward movement to section tops to convert bed in chair position for upward movement of section tops winch handle is rotated in opposite direction.

The ortho bed meets all the needs of the immobile patients who need versatile utility machine to respond & is patient friendly.